

Body/Ribcage

B19-Flat_stand_right

Suggested layer height 0.3mm

Suggested infill percentage 50%-60%

Supports

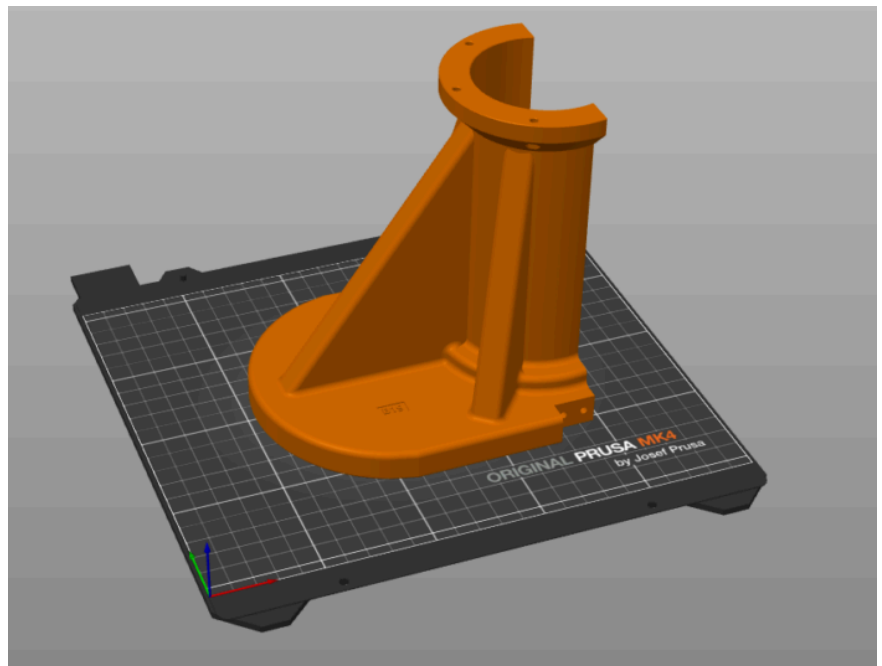
Number of this part for one arm Pib 1

Number of this part for two arm Pib 1

Mass – (Mass with supports) 315g

Printing time 10h 45min

Suggested orientation

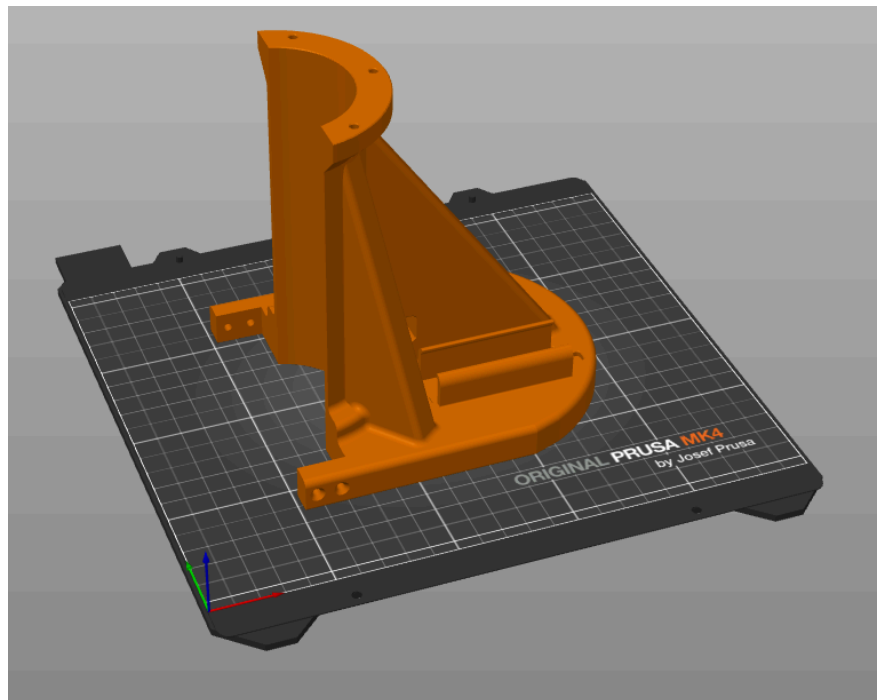


After printing processing None

B20-Flat_stand_right

| | |
|-------------------------------------|----------|
| Suggested layer height | 0.3mm |
| Suggested infill percentage | 50%-60% |
| Number of this part for one arm Pib | 1 |
| Number of this part for two arm Pib | 1 |
| Mass – (Mass with supports) | 292g |
| Printing time | 9h 45min |

Suggested orientation



After printing processing

Clean supports

B41-L-Clavicle_Left

| | |
|-----------------------------|---------|
| Suggested layer height | 0.2mm |
| Suggested infill percentage | 20%-30% |

B41-L-Clavicle_Left

Supports

Number of this part for
one arm Pib

1

Number of this part for
two arm Pib

1

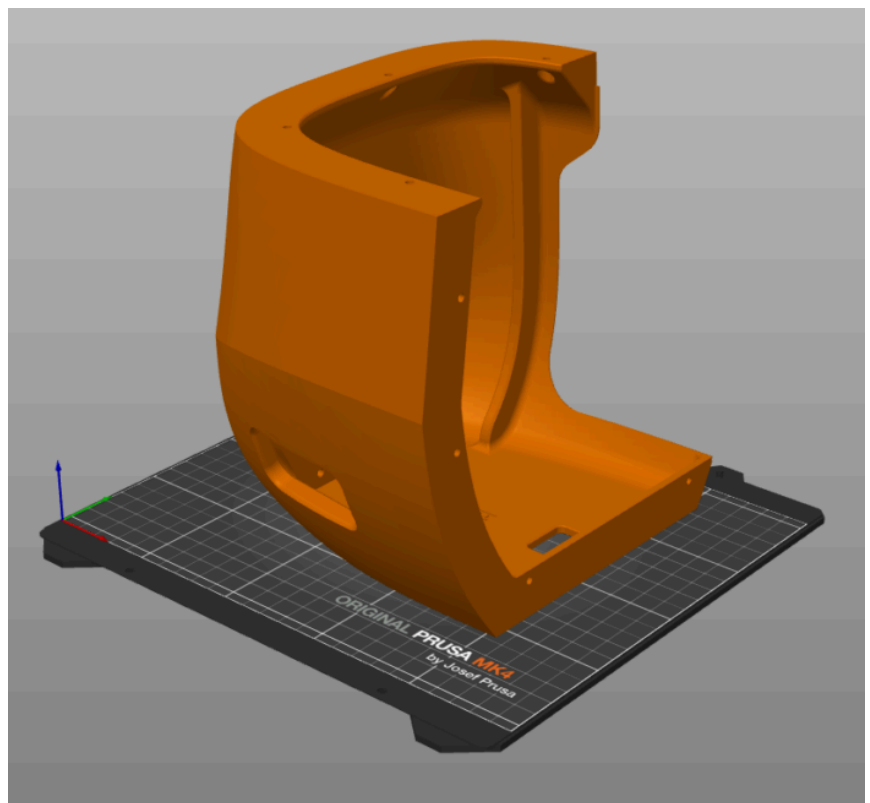
Mass – (Mass with
supports)

290g

Printing time

9h 20min

Suggested orientation



After printing
processing

Clean supports

B41-R-Clavicle_Right

Suggested layer height

0.2mm

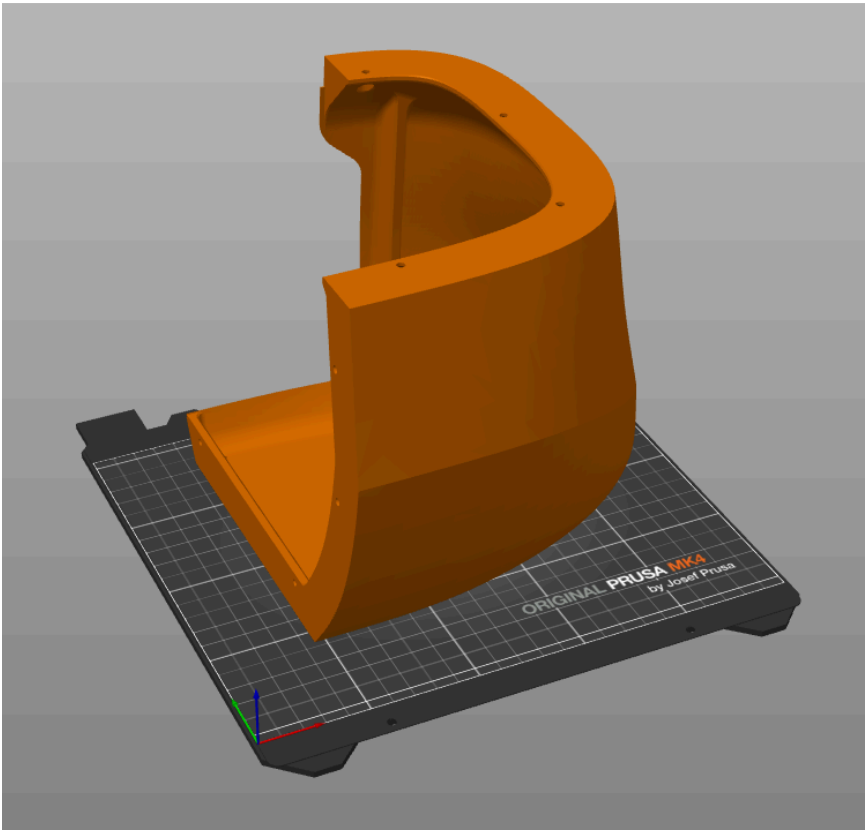
Suggested infill
percentage

20%-30%

B41-R-Clavicle_Right

| | |
|-------------------------------------|------|
| Supports | None |
| Number of this part for one arm Pib | 1 |
| Number of this part for two arm Pib | 1 |
| Mass – (Mass with supports) | 290g |
| Printing time | 9h |

Suggested orientation



| | |
|---------------------------|------|
| After printing processing | None |
|---------------------------|------|

B42-L-Ripcage_Left

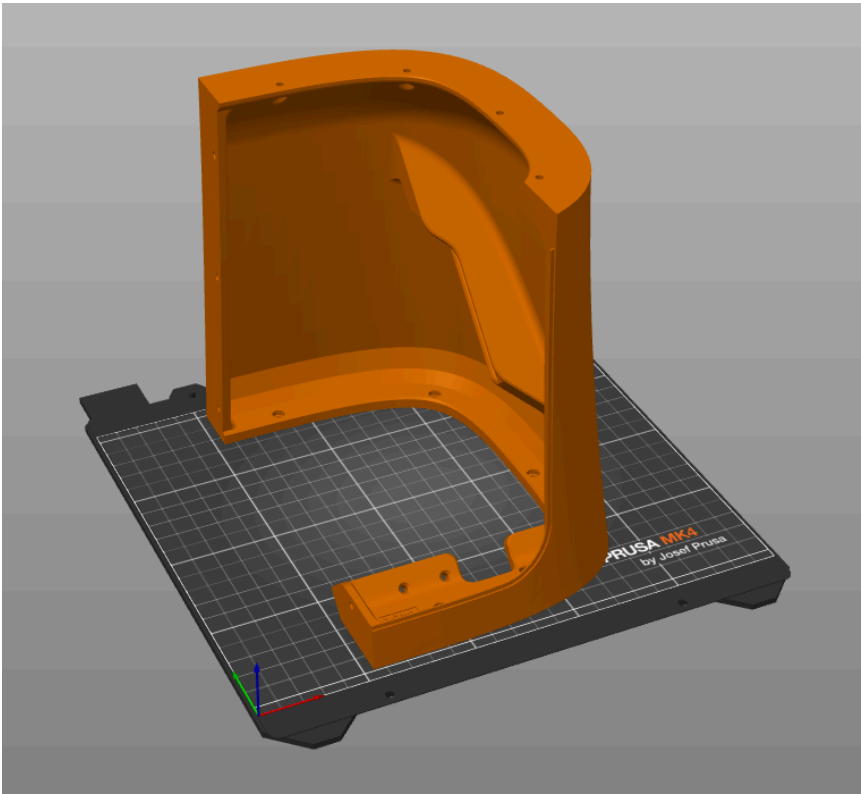
| | |
|-----------------------------|---------|
| Suggested layer height | 0.2mm |
| Suggested infill percentage | 20%-30% |

B42-L-Ripcage_Left

Supports

| | |
|-------------------------------------|----------|
| Number of this part for one arm Pib | 1 |
| Number of this part for two arm Pib | 1 |
| Mass – (Mass with supports) | 230g |
| Printing time | 7h 30min |

Suggested orientation



| | |
|---------------------------|------|
| After printing processing | None |
|---------------------------|------|

B42-R-Ripcage_Right

| | |
|-----------------------------|---------|
| Suggested layer height | 0.2mm |
| Suggested infill percentage | 20%-30% |
| Supports | |

B42-R-Ripcage_Right

Number of this part
for one arm Pib

1

Number of this part
for two arm Pib

1

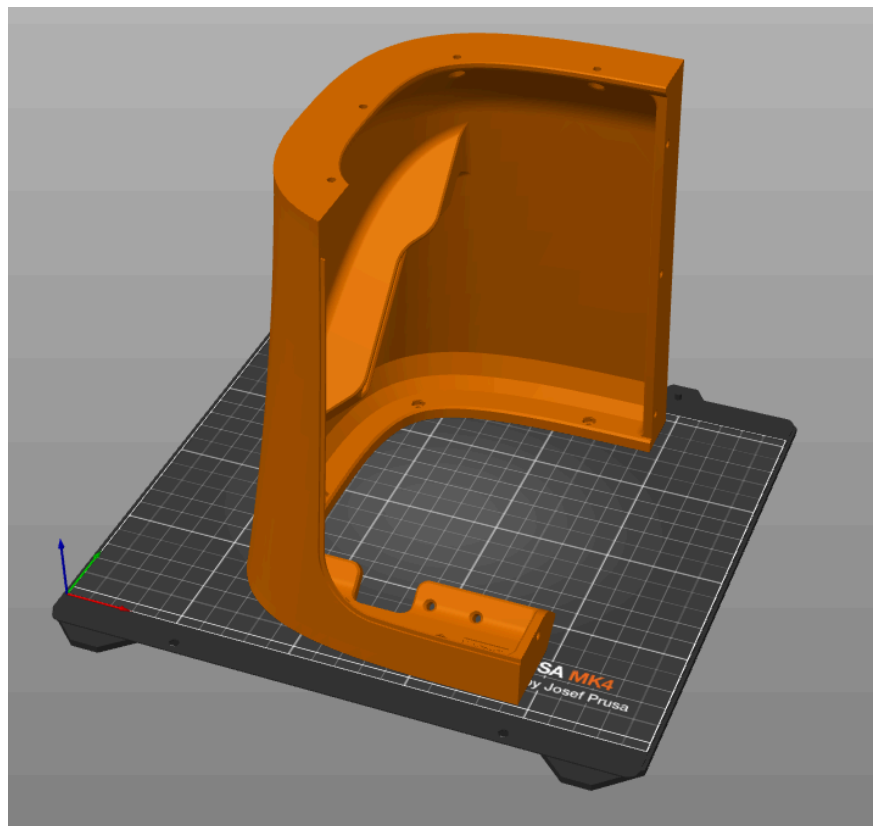
Mass – (Mass with
supports)

230g

Printing time

7h 30min

Suggested orientation



After printing
processing

None

B43-L-Ripcage_Lower_Left

Suggested layer
height

0.2mm

Suggested infill
percentage

40%-50%

B43-L-Ripcage_Lower_Left

Supports

Number of this part
for one arm Pib

1

Number of this part
for two arm Pib

1

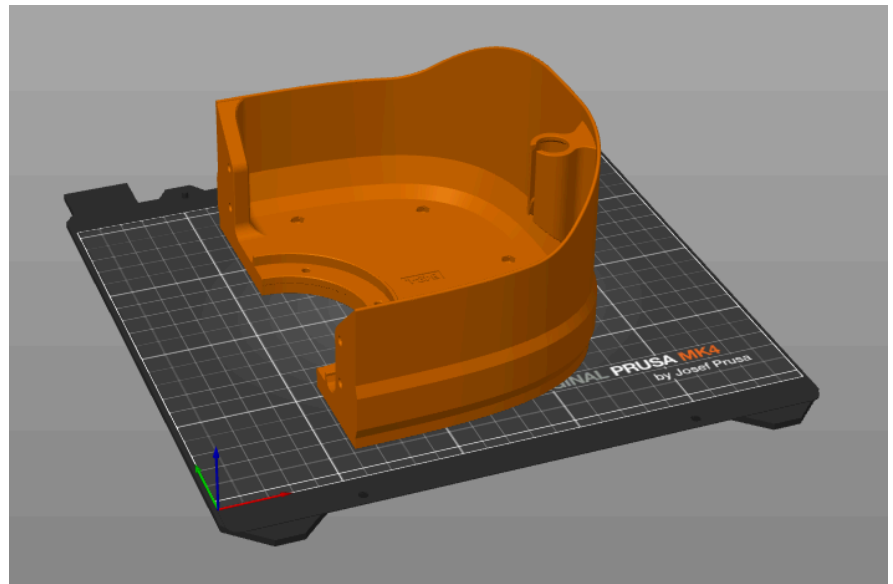
Mass – (Mass with
supports)

200g

Printing time

6h 15min

Suggested orientation



After printing
processing

None

B43-R-Ripcage_Lower_Right

Suggested layer
height

0.2mm

Suggested infill
percentage

40%-50%

Supports

B43-R-Ripcage_Lower_Right

Number of this part
for one arm Pib

1

Number of this part
for two arm Pib

1

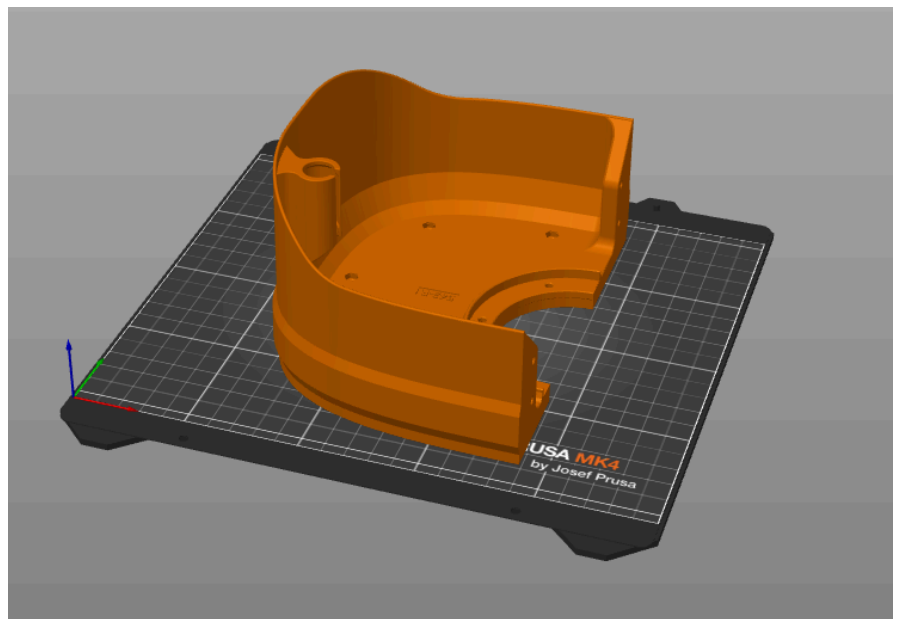
Mass – (Mass with
supports)

200g

Printing time

6h 15min

Suggested
orientation



After printing
processing

None

B44-Electronics_back

Suggested layer height

0.2mm

Suggested infill
percentage

20%-30%

Supports

Number of this part
for one arm Pib

1

B44-Electronics_back

Number of this part
for two arm Pib

1

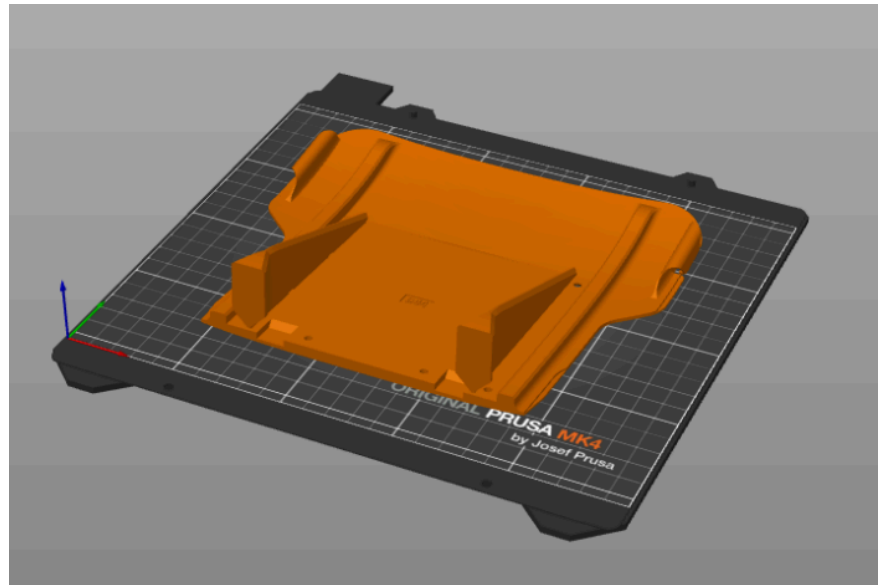
Mass – (Mass with
supports)

88g

Printing time

5h

Suggested orientation



After printing
processing

None

B45-Electronics_base

Suggested layer height

0.2mm

Suggested infill
percentage

20%-30%

Supports

Number of this part
for one arm Pib

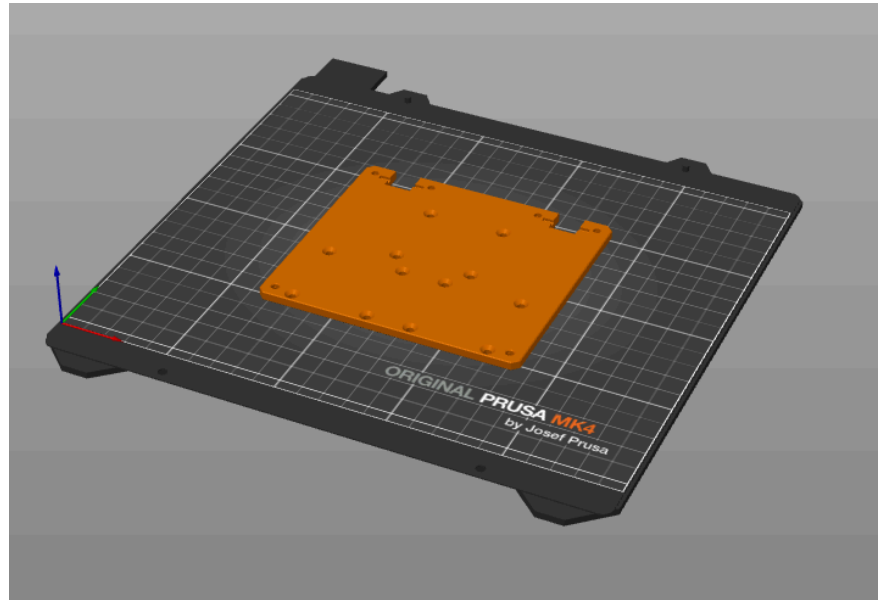
1

Number of this part
for two arm Pib

1

| | |
|-----------------------------|----------|
| Mass – (Mass with supports) | 40g |
| Printing time | 1h 20min |

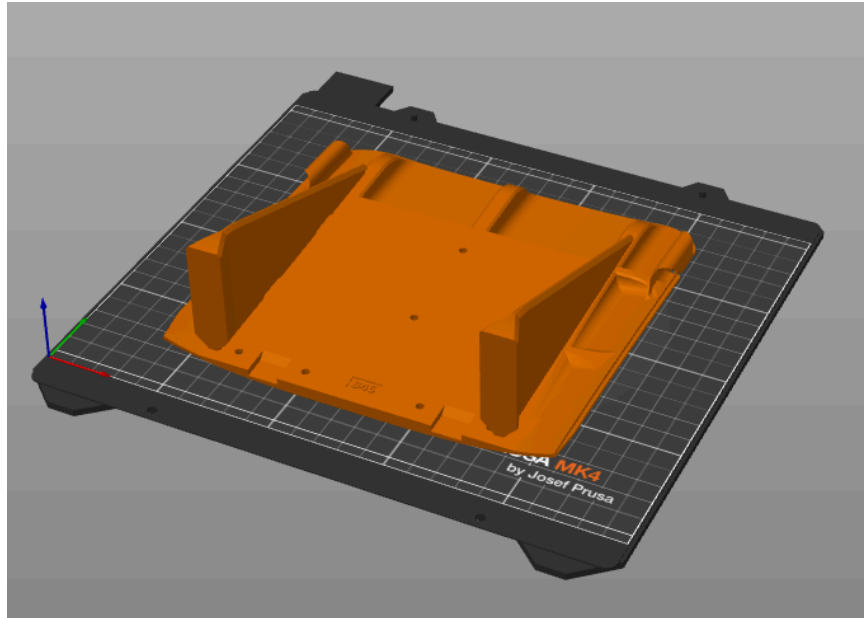
Suggested orientation



| | |
|---------------------------|------|
| After printing processing | None |
|---------------------------|------|

| | |
|-------------------------------------|---------|
| Suggested layer height | 0.2mm |
| Suggested infill percentage | 20%-30% |
| Supports | |
| Number of this part for one arm Pib | 1 |
| Number of this part for two arm Pib | 1 |
| Mass – (Mass with supports) | 110g |
| Printing time | 5h |

Suggested orientation



After printing
processing

None

B55-Logo_edu

Suggested layer height ?

Suggested infill
percentage ?

Supports

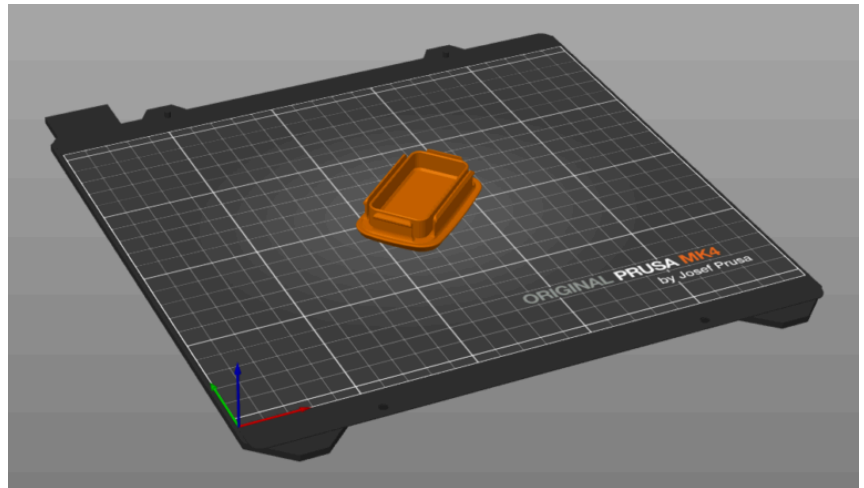
Number of this part for
one arm Pib 1

Number of this part for
two arm Pib 1

Mass – (Mass with
supports) ?

Printing time ?

Suggested orientation



After printing
processing

None